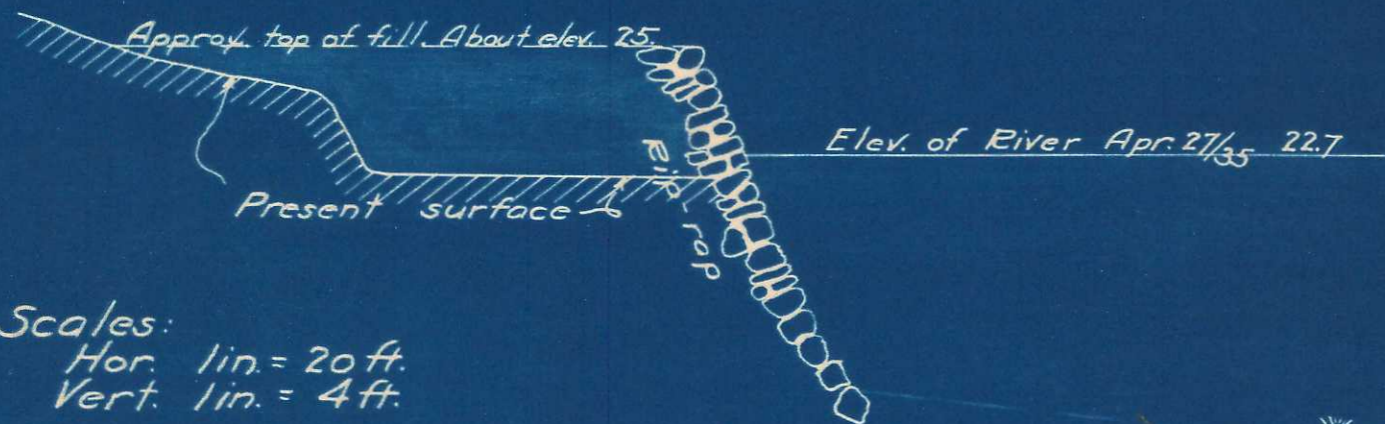
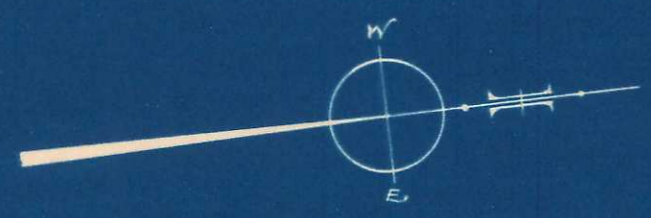
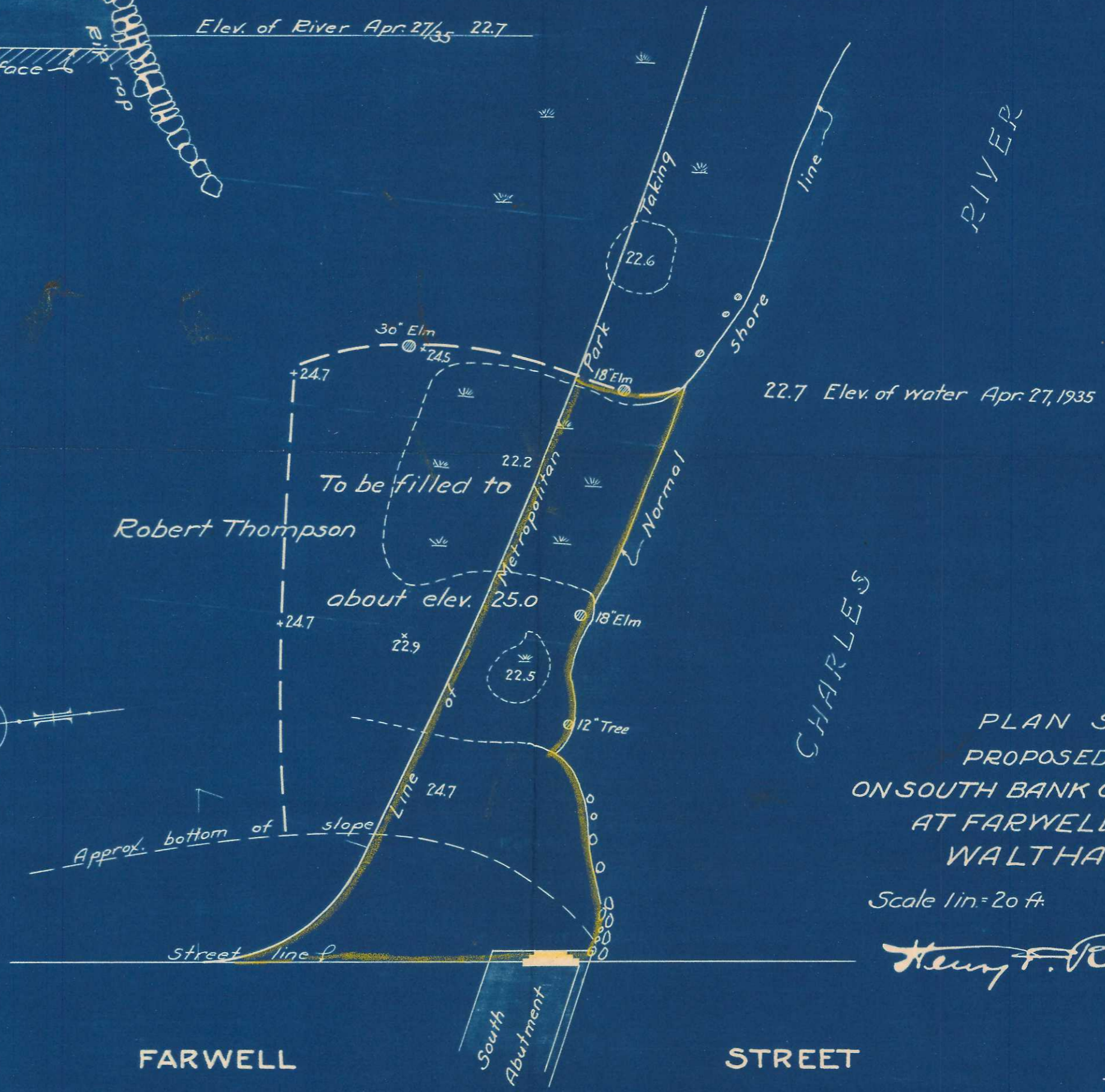


22488*

Typical section of area to be filled.



Scales:
Hor. 1 in. = 20 ft.
Vert. 1 in. = 4 ft.



PLAN SHOWING
PROPOSED FILLING
ON SOUTH BANK OF CHARLES RIVER
AT FARWELL ST. BRIDGE
WALTHAM, MASS.

Scale 1 in. = 20 ft. Apr. 30, 1935

Henry F. Peab. City Engineer

J. R. WORCESTER & CO.
ENGINEERS
79 MILK STREET, BOSTON

0-9435

22488*